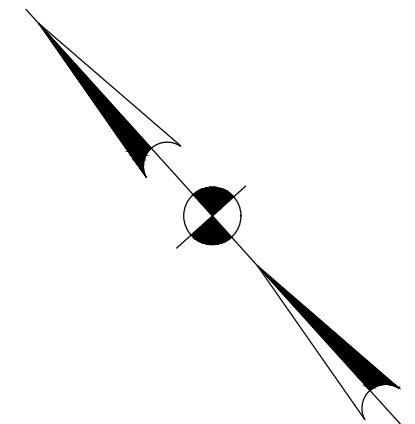
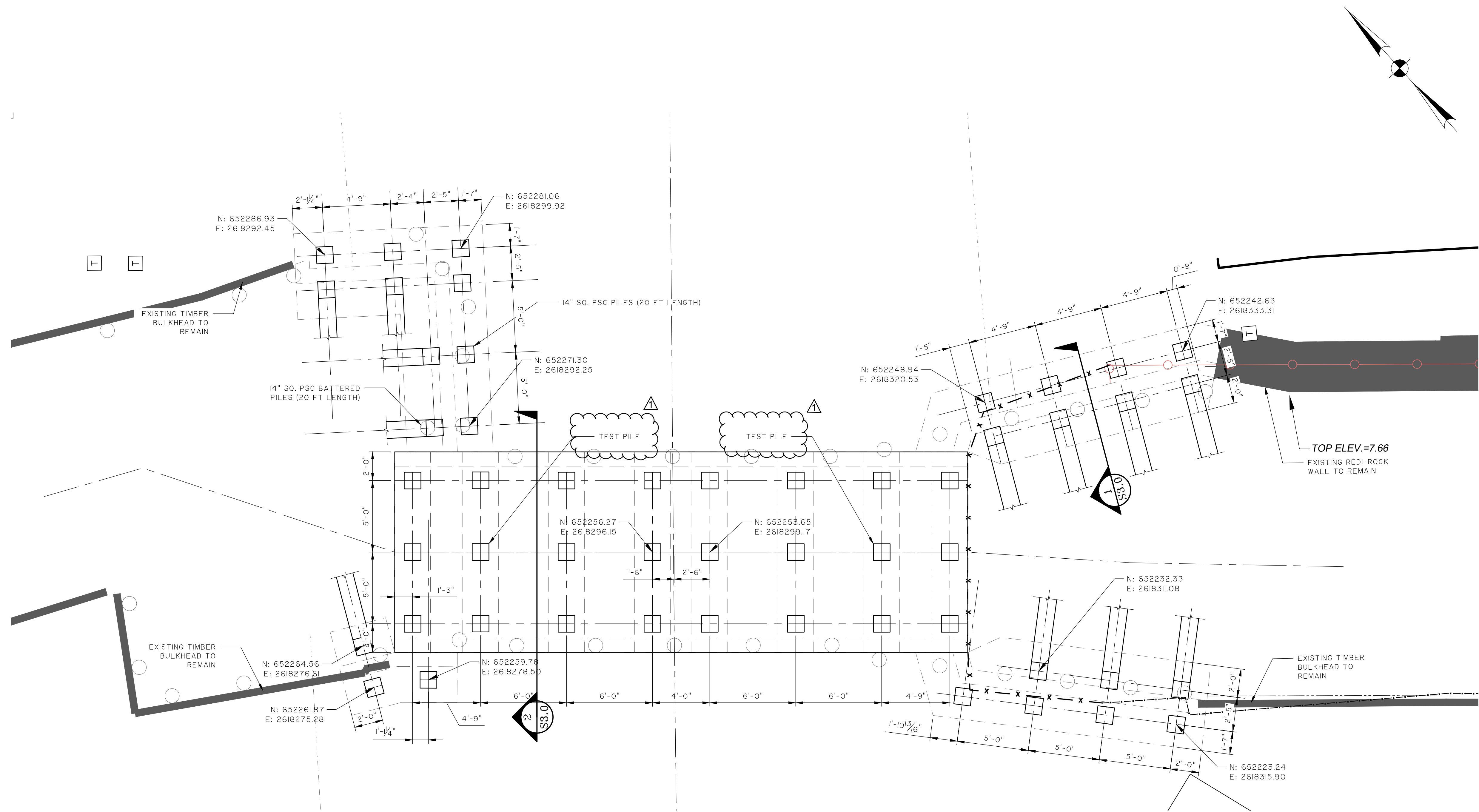
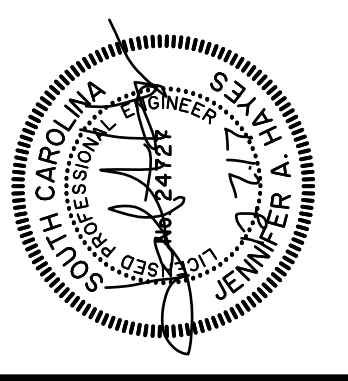
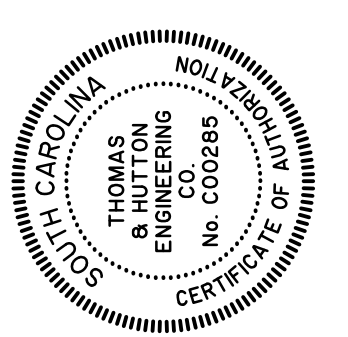


Z:\8773\10773.0000\Engineering\Drawings\Construction\Plan\8773.0000 - Myrtle Swash Pile Plan - 10/20/17.dwg



**1 PILE PLAN**  
 S1.0 1/4" = 1'-0"

- NOTES:**
1. STORM DRAINAGE WITHIN DEWATERING LIMITS TO REMAIN ACTIVE DURING CONSTRUCTION. CONTRACTOR SHALL ANTICIPATE PUMPING STORM WATER FROM WITHIN PROJECT LIMITS.
  2. EXTRACT EXISTING TIMBER PILES THAT CONFLICT WITH THE INSTALLATION OF NEW PSC PILES. TIMBER PILES THAT DO NOT CONFLICT WITH PSC PILE INSTALLATION TO BE CUT OFF BELOW REINFORCED CONCRETE FOUNDATION SYSTEMS AS REQUIRED.



NO.	REVISIONS	BY	DATE
1	BID REV - IDENTIFY TEST PILES	JAH	10.17.17

**THOMAS & HUTTON**  
 611 Burroughs & Chapin Boulevard • Suite 202  
 Myrtle Beach, SC 29577 • 843.839.3545  
 www.thomasandhutton.com

**TOWN OF SURFSIDE**  
 SURFSIDE BEACH, SC

**MYRTLE SWASH BRIDGE REPLACEMENT**

**PILE PLAN**

JOB NO:	J-26773.0000
DATE:	10/20/17
DRAWN:	ES
DESIGNED:	SHG
REVIEWED:	JAH
APPROVED:	JAH
SCALE:	AS SHOWN

**S1.0**