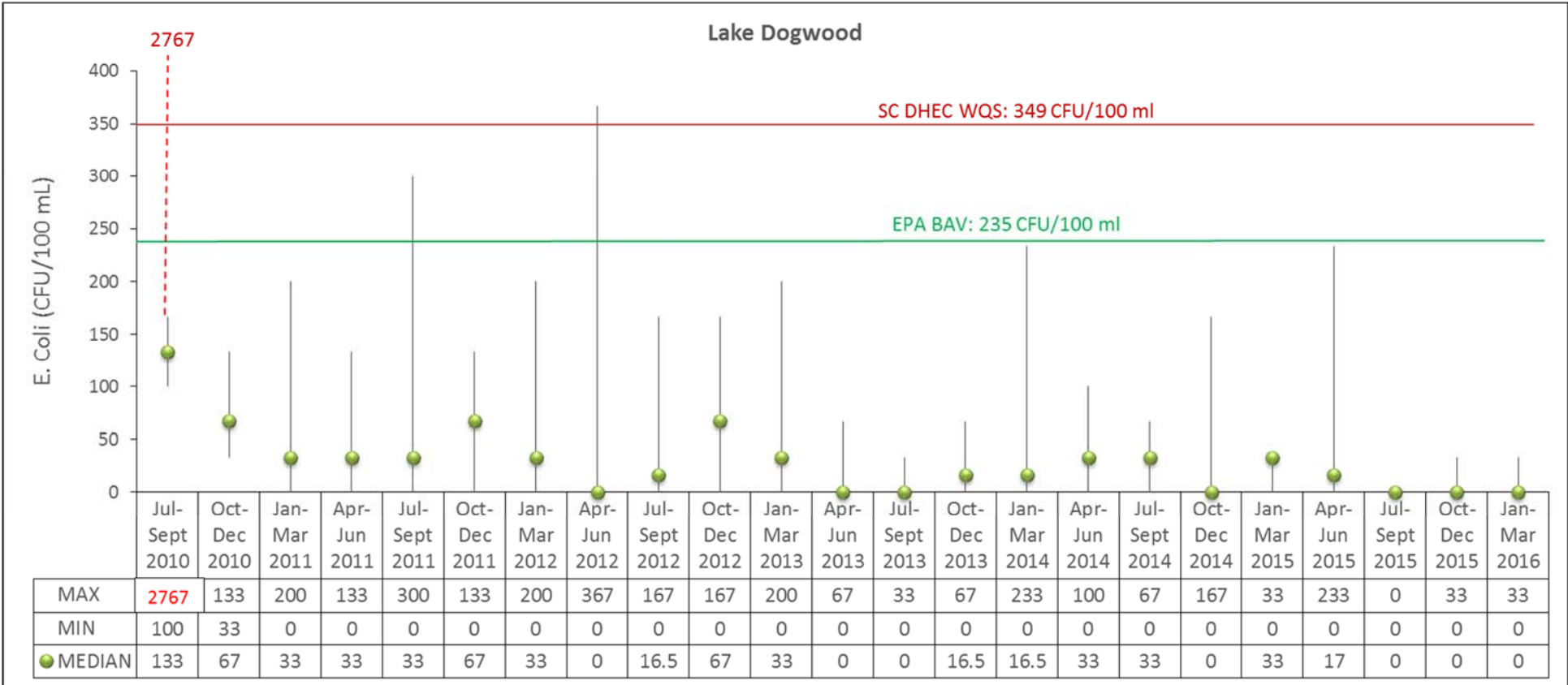


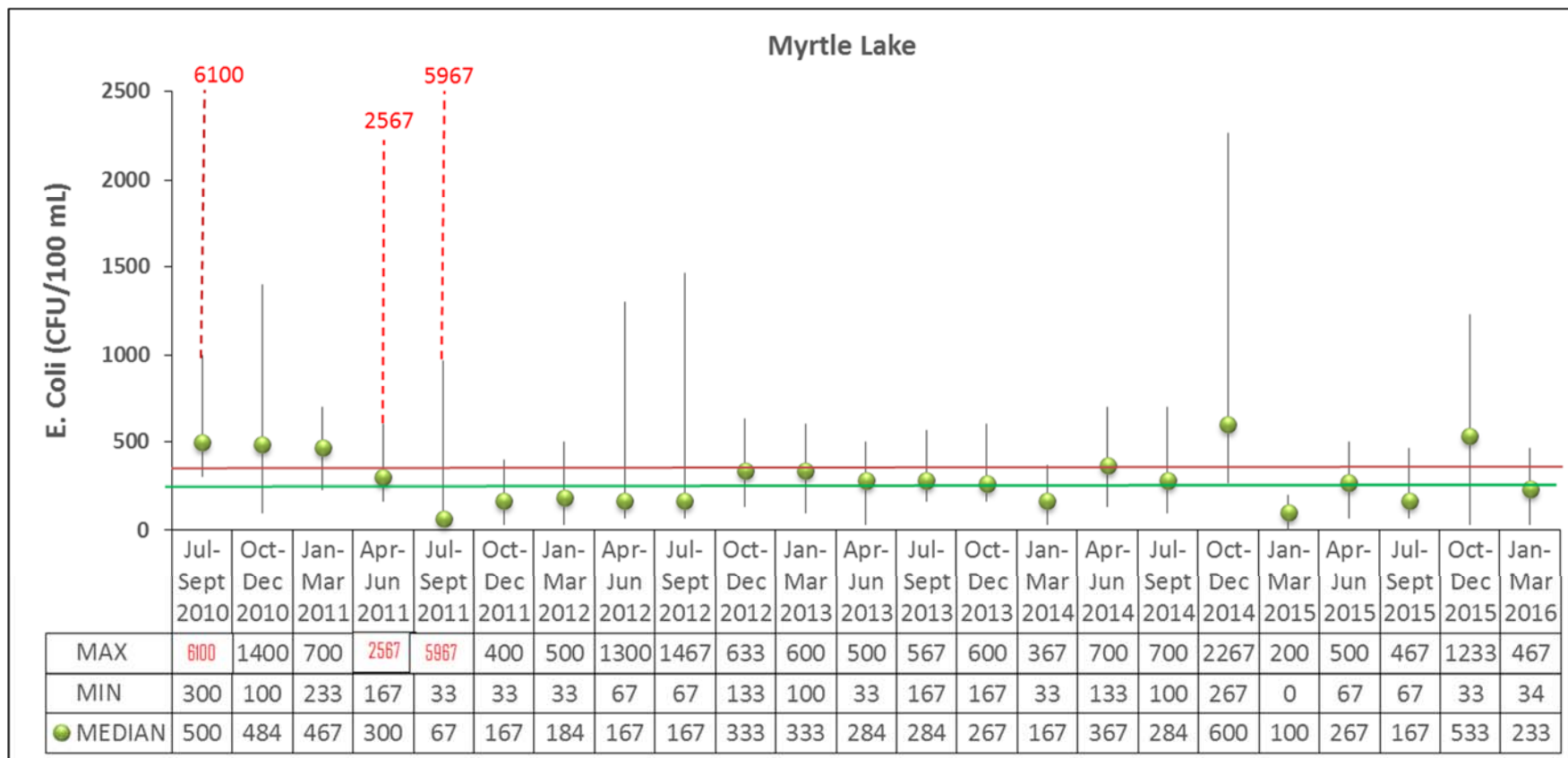
Surfside Volunteer Monitoring Summary Report

4/18/16

E. coli bacteria Lake Dogwood

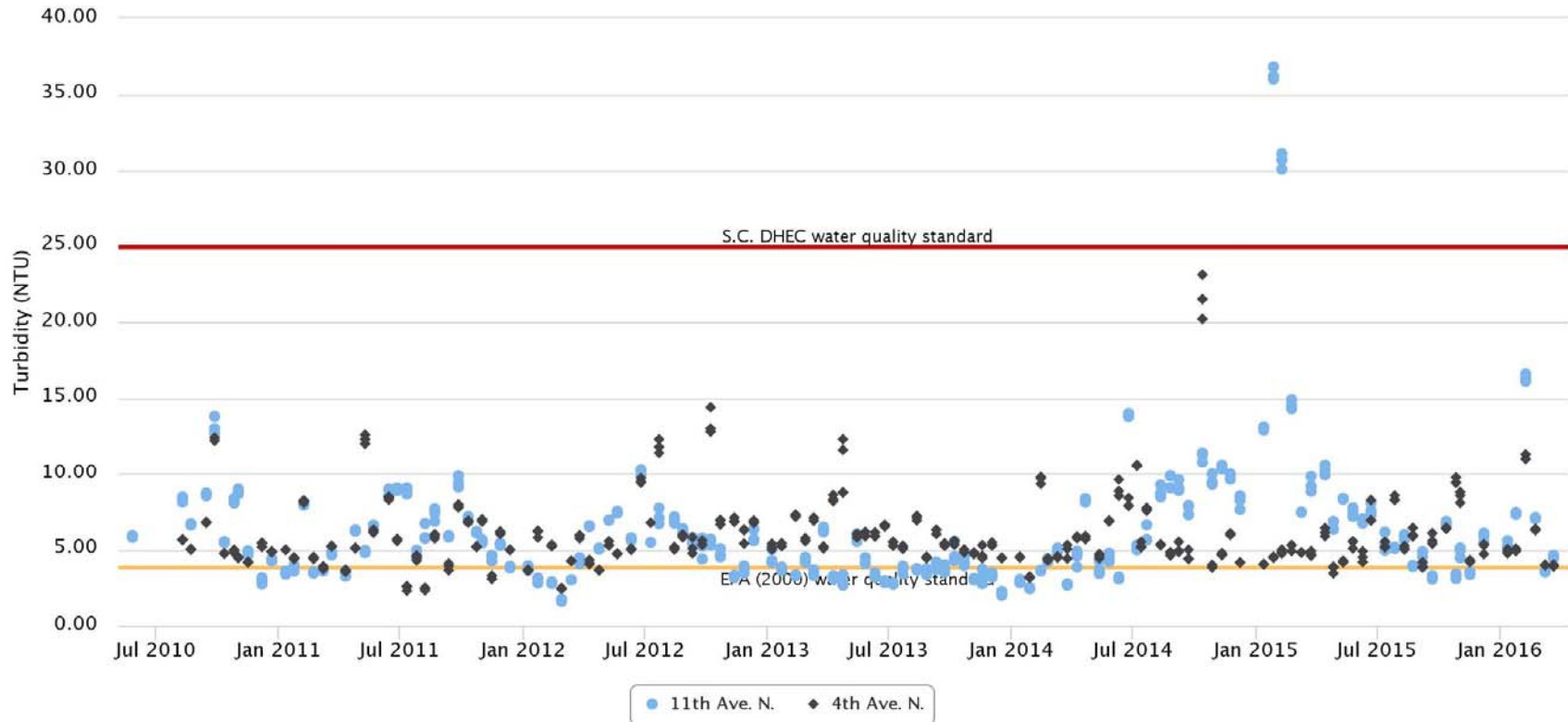


E. coli bacteria Myrtle Lake



Turbidity (NTU)

Data collected between May 27, 2010 and Mar 22, 2016

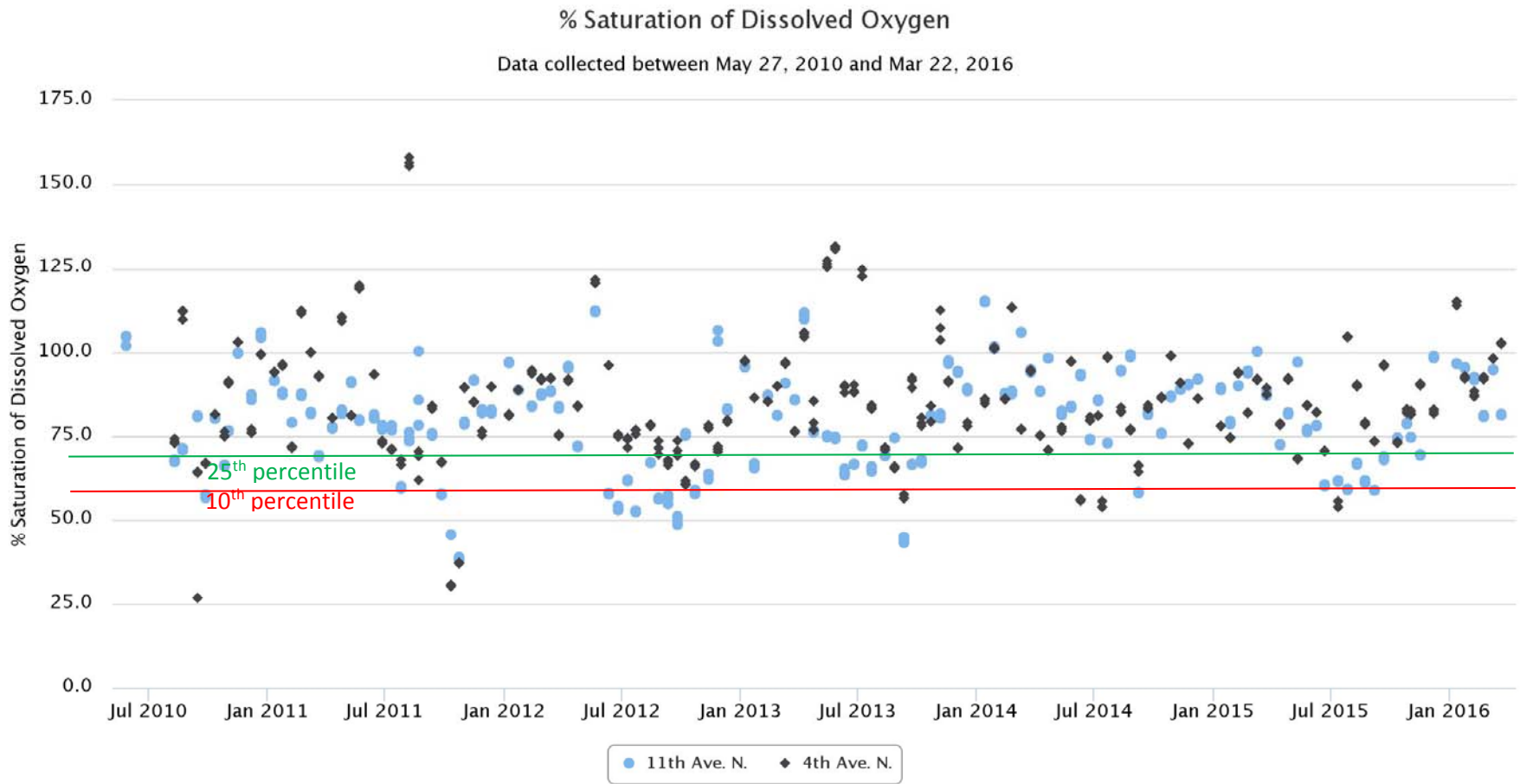


Highcharts.com

Turbidity (NTU)

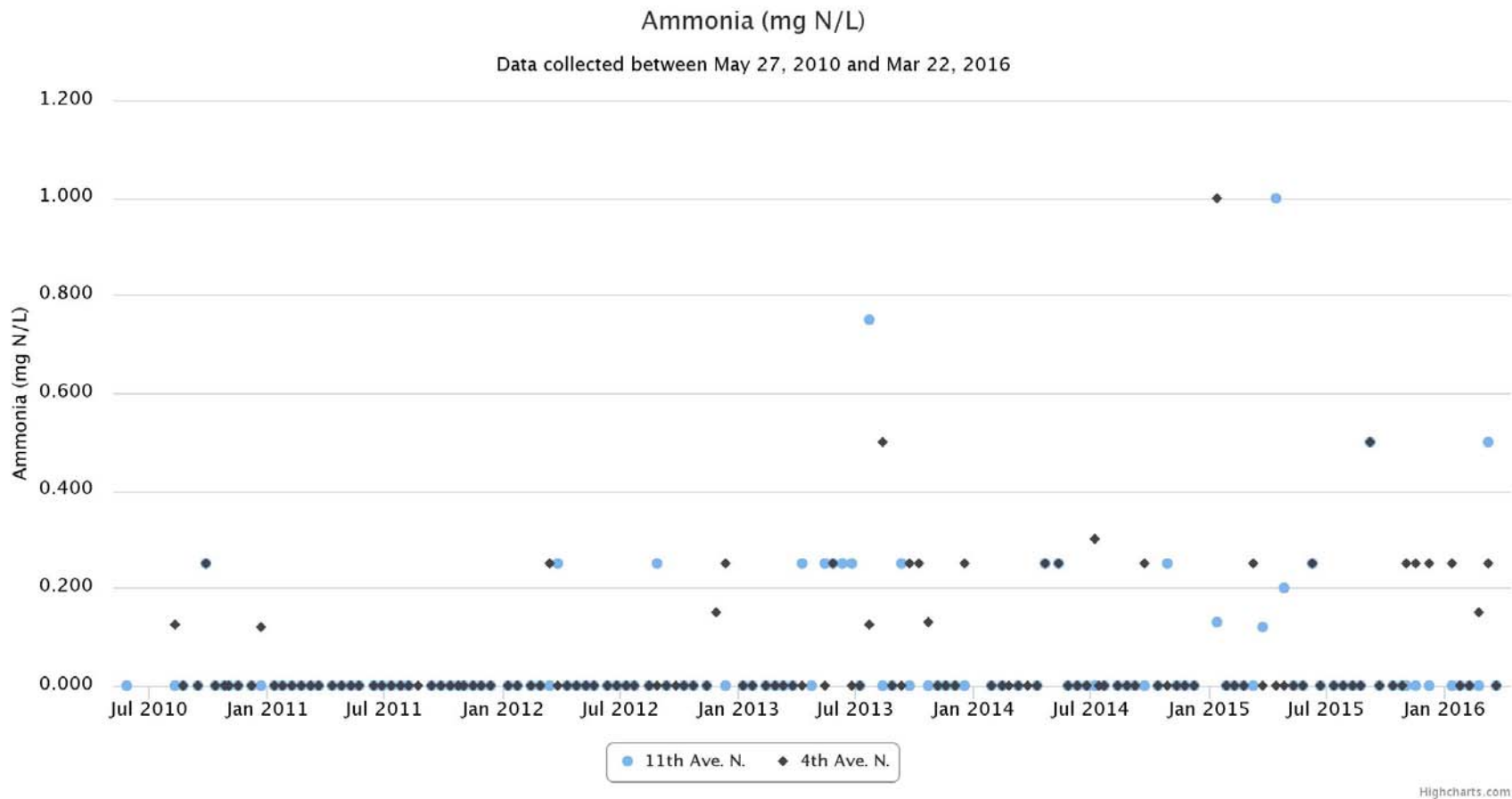
Site Name	# Samples	Mean	S.D.	Median	Max	Min	10th	25th	75th	90th
11th Ave. N.	134	6.25	4.31	5.29	36.80	1.60	3.10	3.68	7.46	9.61
4th Ave. N.	134	5.91	2.42	5.26	23.10	2.30	4.00	4.53	6.42	8.55

✓ Turbidity in Lake Dogwood was elevated again on 2/9/16.



Highcharts.com

- ✓ Percentiles shown are for summertime %DO for Lake Dogwood through March 2016.
- ✓ Looking at the saturation levels eliminates any effect of temperature on oxygen solubility.
- ✓ In 2015, summertime oxygen saturation levels in Lake Dogwood were lower than normal.
- ✓ Lowest dissolved oxygen level was 4.5 mg/L.
- ✓ 2012 had even more occurrences of low dissolved oxygen.



- ✓ Ammonia continues to be infrequently detected at both sites. Nitrate was reported at Lake Dogwood on 2/9/16 and 3/22/16. Last time prior to this was in Sept 2013.

Surfside SC DHEC Ocean Monitoring 2015 (as of 10/15/15)

Swimming Advisories permanently posted at all sites.

Values <10 are represented numerically as "9".

2014 303(d) list

Date	3-d prior rain accumulation (in)	WAC-30, 16th Ave N	WAC-31, 11th Ave N	WAC-31A, 4/5th Ave N	WAC-32, 3rd Ave N	WAC-33, 3rd Ave S	WAC-34, 8th Ave S	WAC-35, 13th Ave S	Number > 104
5/5/15		9	9	10	10	41	9	10	0
5/12/15	1.7	74	10	171	10	9	9	9	1
5/19/15		1541	12033	331	20	41	9	20	3
5/26/15		9	9	171	20	10	9	20	1
6/2/15	1.4	269	10	279	173	20	85	9	3
6/3/15		10			10				
6/9/15	0.1	10	9	9	9	9	9	9	0
6/16/15		10	20	9	9	9	9	10	0
6/23/15	0.1	9	9	9	9	10	10	10	0
6/30/15	0.1	74	9	161	9	52	9	122	2
7/7/15		41	9	9	10	9	9	9	0
7/14/15	1.4	9	9	9	10	9	9	9	0
7/21/15		9	9	9	9	9	9	9	0
7/28/15	1.44 (4/5 days)	9	9	122	9	9	10	9	1
8/4/15	3.96	134	538	1455	74	75	52	738	4
8/5/15	3.98	10			41		9		
8/11/15	0.43 (4/5 days)	9	9	20	10	9	9	9	0
8/18/15	0.00	9	9	9	9	9	9	1014	1
8/25/15	0.02	9	9	10	9	9	9	9	0
9/1/15	4.00	41	408	1305	30	602	9	203	4
9/8/15	1.06	NR	NR	NR	NR	NR	NR	NR	0
9/15/15	0.02	NR	NR	NR	NR	NR	NR	NR	0
9/22/15	0.00	9	10	10	9	9	10	9	0
9/29/15	0.08	98	9	337	84	10	52	10	
Geomean		22	21	43	14	17	11	22	
Median		10	9	10	10	9	9	9	
>60		6	3	9	3	2	1	4	
> 104		3	3	9	1	1	0	4	
> 501		1	2	2	0	1	0	2	
Count		22	20	20	22	20	21	20	
%>60		27%	15%	45%	14%	10%	5%	20%	
%>104		14%	15%	45%	5%	5%	0%	20%	
%>501		5%	10%	10%	0%	5%	0%	10%	
MAX		1541	12033	1455	173	602	85	1014	
MIN		9	9	9	9	9	9	9	

Time trends in ENTERO levels at Surfside Beach SC DHEC beach monitoring stations.

Long-term advisory signs posted in 2008 ★ Advisory Removed in 2016 ★ Advisory Added in 2016 ★

